

## $\beta$ -actin 小鼠单克隆抗体 [OTI1]

### 订购信息

| 货号        | 产品名称                          | 规格    |
|-----------|-------------------------------|-------|
| 78bio1000 | $\beta$ -actin 小鼠单克隆抗体 [OTI1] | 100ul |

### 基本信息

|     |   |
|-----|---|
| 别名  | ACTB, Actin, actin, beta, Actin, cytoplasmic 1, B actin, Beta actin, F actin, PS1TP5BP1, $\beta$ actin    |
| 宿主  | Mouse   |
| 克隆性 | Monoclonal  |
| 免疫原 | Synthetic peptide corresponding to the N terminal of human beta-actin conjugated to KLH.                  |
| 存储  | -20° C or below. Avoid repeated freezing and thawing cycles.  |
| 运输  | 2 - 8° C  |
| 保质期 | Stable for 12 months at -20° C from from date of receipt.<br>Aliquot will be stable at 4° C for 3 months. |

### 应用

|      |   |
|------|---|
| 反应   | Human, Monkey, Mouse, Rat, Dog  |
| 检测应用 | WB  |
| 稀释比例 | 1:2,000   |
| 细胞定位 | Cytoplasm, Cytoskeleton, Nucleus  |
| 阳性对照 | HeLa, Jurkat, A431, HEK293, NIH 3T3, PC12 cells, Human colon (FFPE), Rat colon (FFPE) tissue. Hela cells  |
| 蛋白家族 | ES Cell Differentiation/IPS   |
| 蛋白通路 | Adherens junction, Arrhythmogenic right ventricular cardiomyopathy (ARVC), Dilated cardiomyopathy, Focal adhesion, Hypertrophic cardiomyopathy (HCM), Leukocyte |

transendothelial migration, Pathogenic Escherichia coli infection,  
Regulation of actin  
cytoskeleton, Tight junction, Vibrio cholerae infection, Viral  
myocarditis

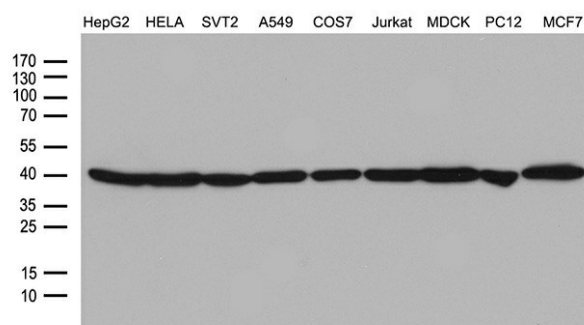
## 产品特性

|       |   |
|-------|---|
| 基因名称  | actin, beta   |
| 蛋白序列号 | NP_001092   |
| 克隆号   | OTI1  |
| 同种型   | IgG3  |
| 分子量   | 41.6 kDa  |
| 浓度    | 1 mg/ml   |
| 纯化方式  | Purified from mouse ascites fluids or tissue culture supernatant by affinity chromatography (protein A/G) |
| 形式    | PBS (PH 7.3) containing 1% BSA, 50% glycerol and 0.02% sodium azide.                                      |

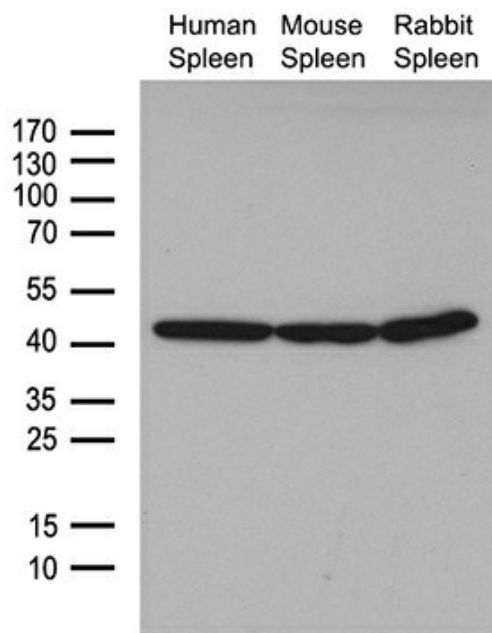
## 背景

Actin is found in nearly all eukaryotic cells, which often constitutes as much as 50% of total cellular protein. It is also one of the most highly conserved proteins, differing by less than 20% among species. In vertebrates, three main groups of actin isoforms,  $\alpha$ ,  $\beta$  and  $\gamma$  have been identified. The  $\alpha$ -actin is a major constituent of the contractile apparatus in muscle tissues. The  $\beta$ - and  $\gamma$ -actins co-exist in most cell types as components of cytoskeleton, and as mediators of internal cell motility. Thus, actin participates in many important cellular processes including muscle contraction, cell motility, cell division and cytokinesis, vesicle and organelle movements, cell signaling, and the establishment and maintenance of cell junctions and cell shape.

## 检测数据



**Western blot analysis of extracts (35ug) from 9 different cell lines by using anti-beta-actin monoclonal antibody (HepG2: human; HeLa: human; SVT2: mouse; A549: human; COS7: monkey; Jurkat: human; MDCK: canine; PC12: rat; MCF7: human) (1:2000).**



**Western blot analysis of extracts (15ug) from 3 different tissues by using anti-beta-actin monoclonal antibody (1:2000).**

本产品仅用于科研非诊断用